

INDICE PRODOTTI - PRODUCT CONTENTS

pag. 40-45

SPECIFICHE TECNICHE
TECHNICAL SPECIFICATIONS

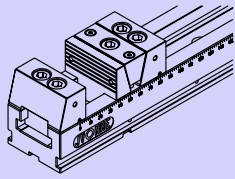
pag. 46-47

PRESCRIZIONI DI UTILIZZO
USE INSTRUCTIONS

pag. 48-53

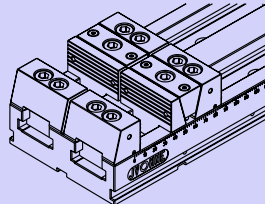
ESEMPI E APPLICAZIONI
EXAMPLES AND APPLICATIONS

pag. 54-57



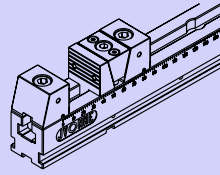
MORSA MULTIPRESA 80
MULTI-GRIP VICE 80

pag. 58-61



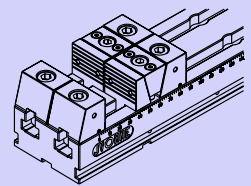
MORSA MULTIPRESA 160
MULTI-GRIP VICE 160

pag. 62-65



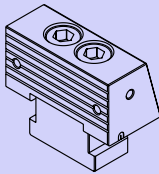
MORSA MULTIPRESA 50
MULTI-GRIP VICE 50

pag. 66-69



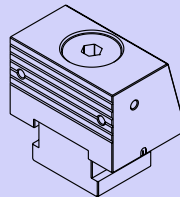
MORSA MULTIPRESA 100
MULTI-GRIP VICE 100

pag. 70-71



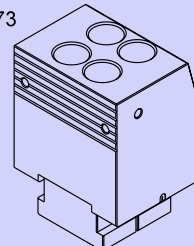
RICAMBI MORSE MULTIPRESA
80-160
MULTI-GRIP VICE 80-160
SPARE PARTS

pag. 72



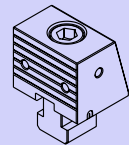
COMPONENTI MORSE
MULTIPRESA 80-160
FORTE SERRAGGIO
MULTI-GRIP VICE 80-160 PARTS
INTENSE TIGHTENING

pag. 73



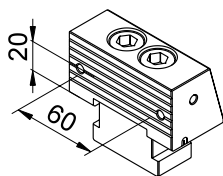
COMPONENTI MORSE
MULTIPRESA 80-160
PRESA ALTA
MULTI-GRIP VICE 80-160 PARTS
HIGH GRIP

pag. 74-75

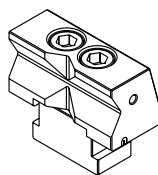


RICAMBI MORSE MULTIPRESA
50-100
MULTI-GRIP VICE 50-100
SPARE PARTS

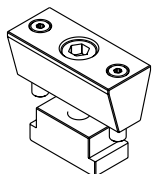
Multi-grip vices 80 – 160 spare parts



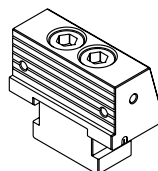
Ganascia fissa 80
completa di viti e tassello
per tipo "A" - "B" - "C"
cod. : J 94 051



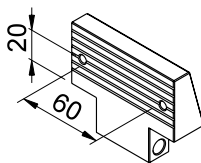
Ganascia fissa 80 a "V" per
tondi
completa di viti e tassello
per tipo "F"
cod. : J 94 059



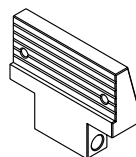
Cuneo 80
completo di viti e tassello
per tipo "A" - "C"
cod. : J 94 052



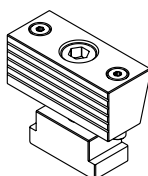
Ganascia fissa 80 con scalini
completa di viti e tassello
per tipo "G"
cod. : J 94 060



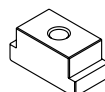
Ganascia mobile 80
completa di sist. bloccaggio
per tipo "A" - "C" - "F"
cod. : J 94 053



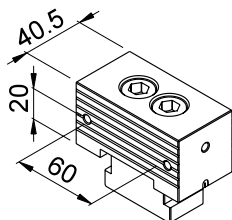
Ganascia mobile 80 con scalini
completa di sist. bloccaggio
per tipo "G"
cod. : J 94 061



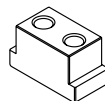
Ganascia discendente 80
completa di viti e tassello
per tipo "B"
cod. : J 94 054



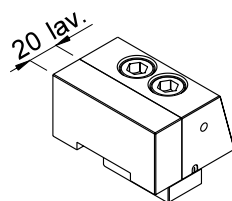
Tassello 1 foro
per Ganascia discendente 80
e Cuneo 80
cod. : J 94 013



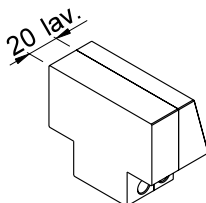
Ganascia fissa 80 parallela
completa di viti e tassello
per tipo "C"
cod. : J 94 055



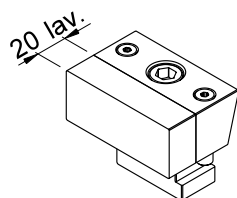
Tassello 2 fori
per Ganascia fissa 80
cod. : J 94 014



Ganascia fissa 80
lavorabile
completa di viti e tassello
per tipo "D" - "E"
cod. : J 94 056

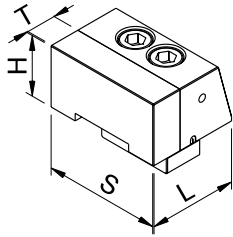


Ganascia mobile 80 lavorabile
completa di sist. bloccaggio
per tipo "D"
cod. : J 94 057

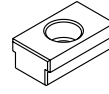


Ganascia discendente 80
lavorabile
completa di viti e tassello
per tipo "E"
cod. : J 94 058

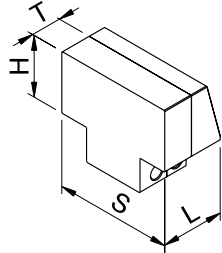
Multi-grip vices 80 – 160 spare parts



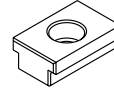
Ganascia fissa 80 lavorabile
completa di viti e tassello
per tipo "D" - "E"
Personalizzabile su quote S L H T
cod. : J 94 056 P



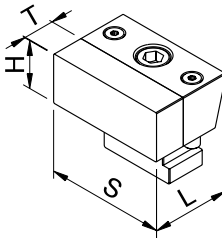
Linguetta per cave a T
Riduzione 14 - 12
cod. : J 94 016 R14



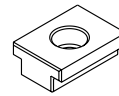
Ganascia mobile 80 lavorabile
completa di sist. bloccaggio
per tipo "D"
Personalizzabile su quote S L H T
cod. : J 94 057 P



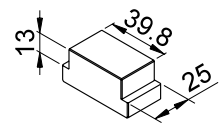
Linguetta per cave a T
Riduzione 16 - 12
cod. : J 94 016 R16



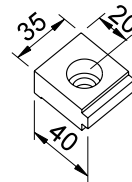
Ganascia discendente 80 lavorabile
completa di viti e tassello
per tipo "E"
Personalizzabile su quote S L H T
cod. : J 94 058 P



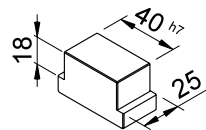
Linguetta per cave a T
Riduzione 18 - 12
cod. : J 94 016 R18



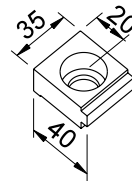
Tassello senza foro
per Ganascia discendente 80
e Cuneo 80
cod. : J 94 013 P



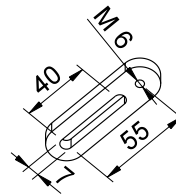
Ganascia di bloccaggio laterale
per viti M12
cod. : J 94 040 M12



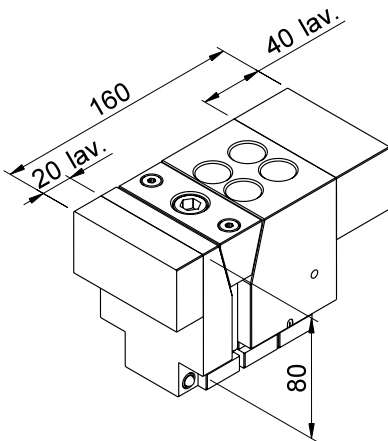
Tassello senza fori
per Ganascia fissa 80
cod. : J 94 014 P



Ganascia di bloccaggio laterale
per viti M16
cod. : J 94 040 M16

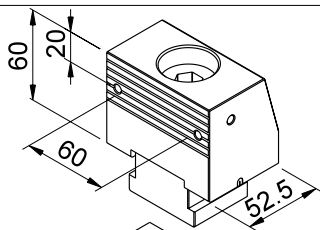


Piastrina per riferimento
laterale morse
cod. : J 94 041

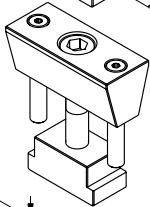


Gruppo di spinta aggiuntivo 80 lavorabile H80
completa di viti e tasselli
per tipo "D" speciale H80
cod. : J 80 001 D H80

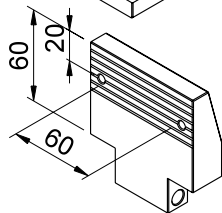
Parts for intense tightening vices 80 – 160



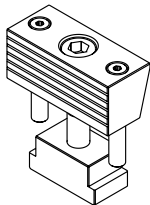
Ganascia fissa 80 H60
Forte serraggio
completa di vite e tassello
per tipo "AW" - "BW" - "CW"
cod. : J 94 071 W



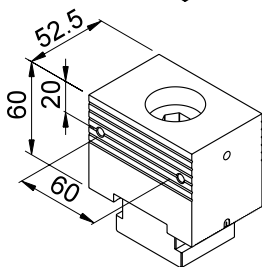
Cuneo 80 H60
completo di viti e tassello
per tipo "AW" - "CW"
cod. : J 94 052 W



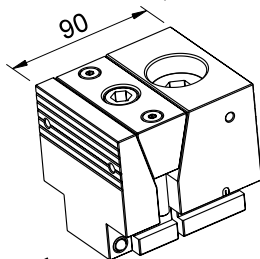
Ganascia mobile 80 H60
completa di sist. bloccaggio
per tipo "AW" - "CW"
cod. : J 94 053 W



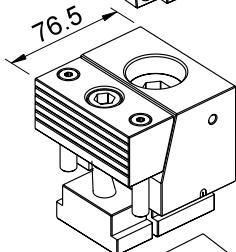
Ganascia discendente 80 H60
completa di viti e tassello
per tipo "BW"
cod. : J 94 054 W



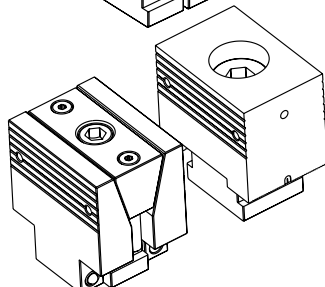
Ganascia fissa 80
parallela H60
Forte serraggio
completa di viti e tassello
per tipo "CW"
cod. : J 94 072 W



Gruppo di spinta H 60
Tipo "A" (traslante)
Forte serraggio
cod. : J 80 001 AW

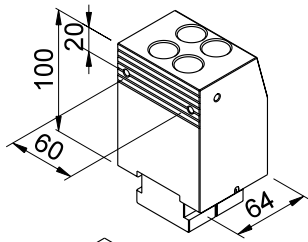


Gruppo di spinta H 60
Tipo "B" (discendente)
Forte serraggio
cod. : J 80 001 BW

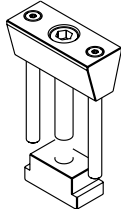


Gruppo di spinta H 60
Tipo "C" (2x1)
Forte serraggio
cod. : J 80 001 CW

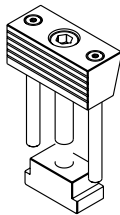
Parts for high grip vices 80 – 160



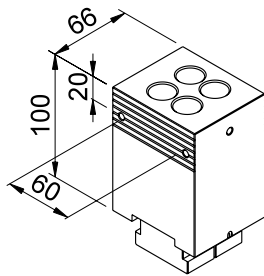
Ganascia fissa 80 H100
Presa Alta
completa di vite e tassello
per tipo "BX"
cod. : J 94 081 X



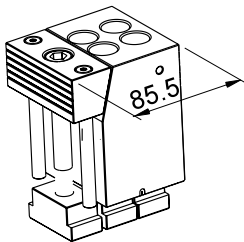
Cuneo 80 H100
completo di viti e tassello
cod. : J 94 052 X



Ganascia discendente 80 H100
completa di viti e tassello
per tipo "BX"
cod. : J 94 054 X

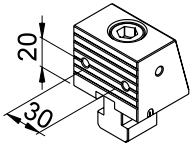


Ganascia fissa 80 parallela H100
Presa Alta
completa di viti e tassello
cod. : J 94 082 X

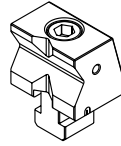


Gruppo di spinta H 100
Tipo "B" (discendente)
Presa Alta
cod. : J 80 001 BX

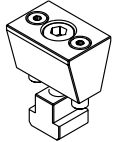
Multi-grip vices 50 – 100 spare parts



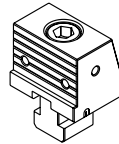
Ganascia fissa 50
completa di viti e tassello
per tipo "A" - "B" - "C"
cod. : J 97 051



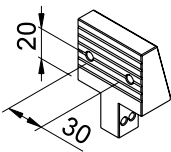
Ganascia fissa 50 a "V" per tondi
completa di viti e tassello
per tipo "F"
cod. : J 97 059



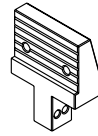
Cuneo 50
completo di viti e tassello
per tipo "A" - "C"
cod. : J 97 052



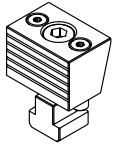
Ganascia fissa 50 con scalini
completa di viti e tassello
per tipo "G"
cod. : J 97 060



Ganascia mobile 50
completa di sist. bloccaggio
per tipo "A" - "C" - "F"
cod. : J 97 053



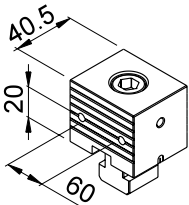
Ganascia mobile 50 con scalini
completa di sist. bloccaggio
per tipo "G"
cod. : J 97 061



Ganascia discendente 50
completa di viti e tassello
per tipo "B"
cod. : J 97 054



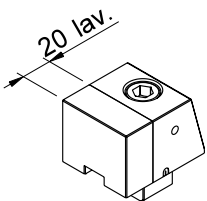
Tassello 1 foro M10
per Ganascia discendente 50
e Cuneo 50
cod. : J 97 013



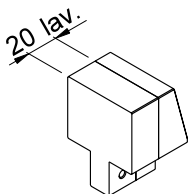
Ganascia fissa 50 parallela
completa di viti e tassello
per tipo "C"
cod. : J 97 055



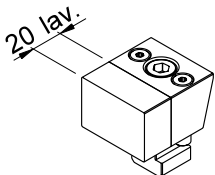
Tassello 1 foro M12
per Ganascia fissa 50
cod. : J 97 014



Ganascia fissa 50
lavorabile
completa di viti e tassello
per tipo "D" - "E"
cod. : J 97 056

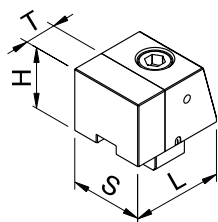


Ganascia mobile 50 lavorabile
completa di sist. bloccaggio
per tipo "D"
cod. : J 97 057

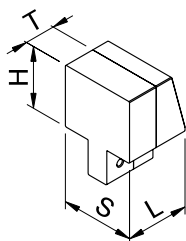


Ganascia discendente 50
lavorabile
completa di viti e tassello
per tipo "E"
cod. : J 97 058

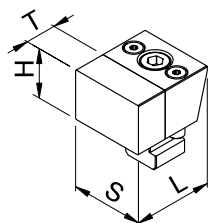
Multi-grip vices 50 – 100 spare parts



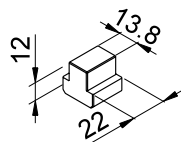
Ganascia fissa 50 lavorabile
completa di viti e tassello
per tipo "D" - "E"
Personalizzabile su quote S L H
T
cod. : J 97 056 P



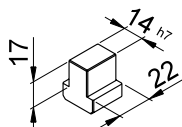
Ganascia mobile 50 lavorabile
completa di sist. bloccaggio
per tipo "D"
Personalizzabile su quote S L
H T
cod. : J 97 057 P



Ganascia discendente 50
lavorabile
completa di viti e tassello
per tipo "E"
Personalizzabile su quote S L H T
cod. : J 97 058 P



Tassello senza foro
per Ganascia discendente 50
e Cuneo 50
cod. : J 97 013 P



Tassello senza foro
per Ganascia fissa 50
cod. : J 97 014 P