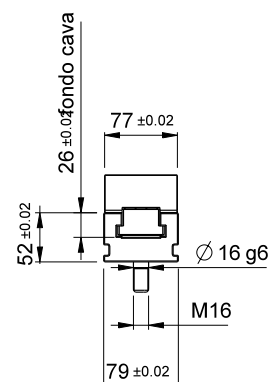
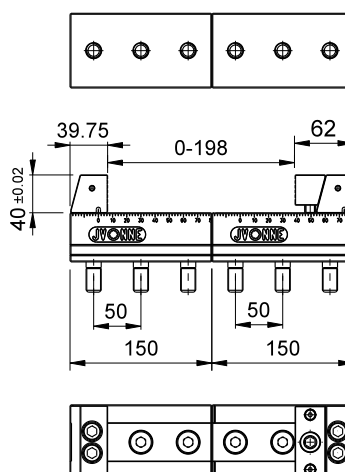
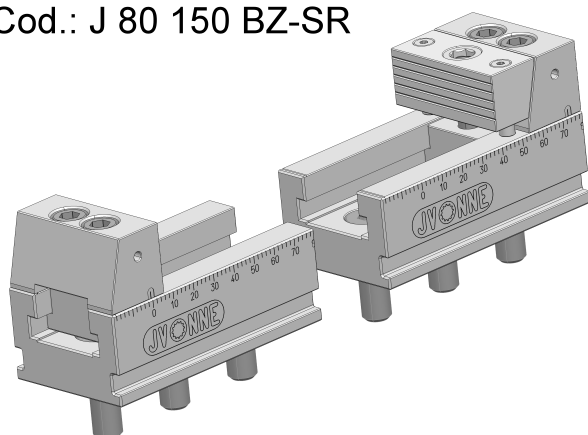
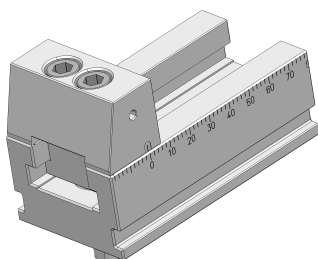


Type of
workpiece grip

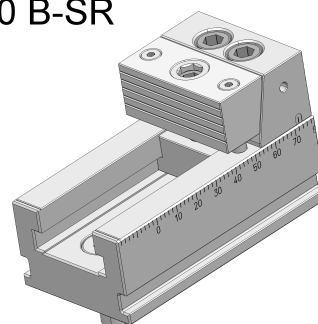
Cod.: J 80 150 BZ-SR



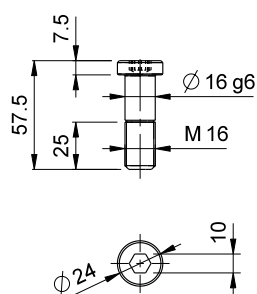
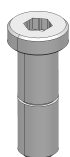
Cod.: J 80 150 Z-SR



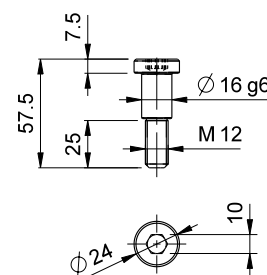
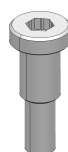
Cod.: J 80 150 B-SR



Cod.: J 94 045-SR



Cod.: J 94 045 M12-SR



Morsa multipresa componibile taglia 80 completo di corpo L150 e viti/anelli di bloccaggio/centraggio

COD.	L	
J 80 150 BZ-SR	150+150	Morsa componibile completa di ganaschia fissa e mobile (viti M16)
J 80 150 Z-SR	150	Ganaschia fissa della morsa componibile tg 80 (viti M16)
J 80 150 B-SR	150	Ganaschia mobile della morsa componibile tg 80 (viti M16)
J 94 045-SR		Vite a colletto rettificato $\varnothing 16 \div \text{M16}$
J 80 150 BZ M12-SR	150+150	Morsa componibile completa di ganaschia fissa e mobile (viti M12)
J 80 150 Z M12-SR	150	Ganaschia fissa della morsa componibile tg 80 (viti M12)
J 80 150 B M12-SR	150	Ganaschia mobile della morsa componibile tg 80 (viti M12)
J 94 045 M12-SR		Vite a colletto rettificato $\varnothing 16 \div \text{M12}$