

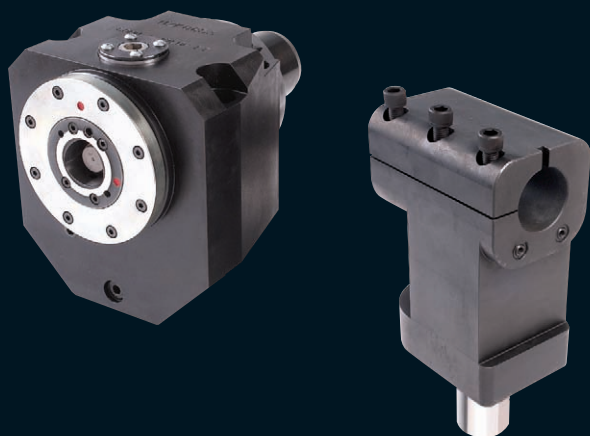


# Mejora la Eficiencia y Fiabilidad de sus Procesos de Producción

**Craftsman Tools puede proporcionar el soporte y portaherramientas necesario para generar los mejores resultados en una instalación de producción moderna.**

Nuestra gama de portaherramientas y accesorios pueden reducir los costes de producción y mejorar la calidad.

La adaptación de portaherramientas estandar o especiales puede dar una ventaja adicional a la productividad cuando se combinan cuidadosamente con la capacidad de la máquina y los requisitos del producto.



## **Investigación & Desarrollo**

Nuestro departamento de investigación y desarrollo actualiza constantemente nuestra gama diseñando y desarrollando nuevos productos estandar y aplicaciones especiales. Añadidos recientemente se incluyen:

- **Nueva gama de portaherramientas motorizados.**
- **Portaherramientas combinados.**
- **Portas barras de mandrinar y casquillos ranurados.**
- **Portaherramientas Coromant Capto®.**
- **Torretas integradas Coromant Capto®.**

También ofrecemos sujeción de piezas de precisión, desde centros rotativos estandar para trabajos pesados hasta grandes accesorios a medida. *(Ver nuestros folleto de sujeción de piezas)*

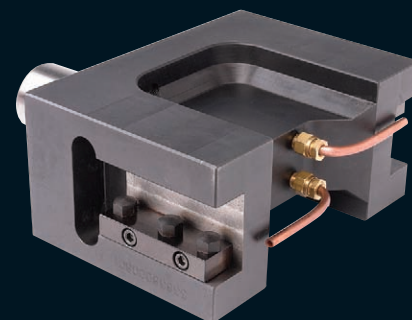
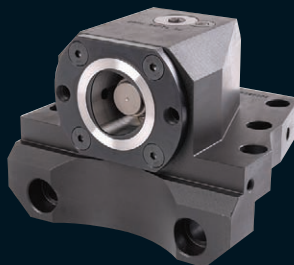


**CRAFTSMAN  
TOOLS**

# Amplia Gama de Productos

**Craftsman Tools ha estado a la vanguardia de la sujeción de herramientas durante más de 60 años.**

Estamos comprometidos con la expansión continua de nuestra gama de portaherramientas para satisfacer las necesidades de los clientes. Nuestros productos estándar se ven reforzados por nuestra tradición de diseñar y fabricar productos especiales.



**Nuestros clientes son nuestra fuerza**

**Tenemos estrechas relaciones con Sandvik Coromant y Mazak.**

Nuestra amplia gama de adaptadores portaherramientas se adapta a las máquinas de fabricantes líderes, incluyendo

- Mazak
- Doosan
- Mori Seiki
- Okuma
- Hwacheon
- Nakamura
- Haas
- Colchester
- Citizen
- Hyundai Kia



# Privileged Partnership With Mazak

- Long-term partner (since 1987).
- Privileged supplier for essential parts (toolholders and accessories).
- Good knowledge of Mazak's products and specifications.
- Reciprocal transfer of information.
- Worldwide collaboration.

*For more information on our full range of Mazak Toolholders, see our dedicated Mazak catalogue.*

#### **We Offer:**

- Extensive stocks of our standard range.
- Short delivery times for bespoke toolholders.
- Advice on the best solutions.
- Full refurbishment service for all our toolholders.



**CRAFTSMAN  
TOOLS**

#### **DRIVEN TOOLHOLDERS**

- Large stocks of horizontal, vertical and double-ended versions.
- Through and external coolant options available.
- High-quality bearings and seals for a long life.



#### **SPLIT BORING BAR HOLDERS**

##### **For use with anti-vibration bars**

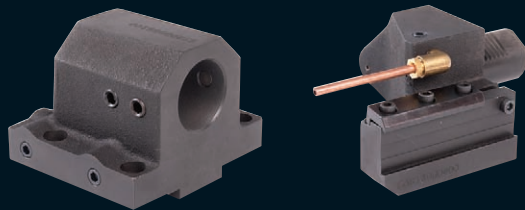
- Deeper boring capability (up to 10 times diameter).
- Increased cutting performance.
- Range available for most of the major Machine Tool Manufacturers, including Mazak, Doosan, Mori Seiki, Okuma.

*The Split Boring Bar Holder will also increase the performance of standard Boring Bars.*



## STATIC TOOLHOLDERS

- Both standard coolant and high pressure solutions.
- Full range of toolholders available to suit a wide range of machines and applications.



## REDUCING SOCKETS

Drill, Boring Bar and U-Drill Reducing Sockets available in most standard sizes. Adaptor sockets have also been developed allowing Metric toolholders to accept Inch tools.

## ACCESSORIES & SPARE PARTS

*To facilitate the long-term use of our products.*

Examples include coolant nozzles, screws, turret caps, shanks, locating pins, clamp plates, collet nuts, seals, bearings and gears.

## COMBINATION LATHE TOOLHOLDERS



- Reduce the number of holders that you need.
- An economic alternative to your lathe manufacturer's standard toolholders.

- One holder for all internal turning.
- One holder for all external turning.

***Internal holders can be used for both traditional Boring Bars and U-Drills.***

- Attach the rear plate for through-tool coolant and U-Drills.
- Remove the rear plate for Boring Bar use.

***External holders can be used for forward and reverse turning.***

- The tool clamp block assembly can easily be repositioned in the opposing side of the tool slot.



# Close Collaboration With Sandvik Coromant

*“Craftsman Tools is a long-standing partner to us in the field of Coromant Capto® clamping units and split boring bar holders for Turning Centres. This close collaboration ensures that adoption of Quick-Change and Silent Tools is available to our customers for all Turning Centre configurations providing the best possible machine utilisation and metal cutting efficiency combined with process security”*

**Chris Mills**

**AB Sandvik Coromant**

Global Manager - Machine Integration

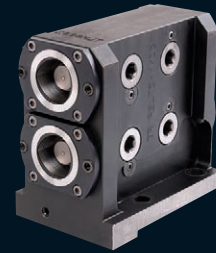


As a result of partnership agreements built up over the last 20 years, Craftsman Tools supplies Sandvik's Coromant Capto® quick change toolholders for many leading machine tools, including those of Mori Seiki, Okuma, Haas, Doosan, and Mazak.



## **COROMANT CAPTO®**

- Shortest downtime due to reduced time for set-ups
- Reduced machining times due to greater stability
- Universal modular quick change tooling system



*For further information, please contact your local Sandvik Coromant representative.*



**CRAFTSMAN  
TOOLS**

## **COROMANT CAPTO® INTEGRATED TURRETS**

- Increased rigidity
- Through-tool coolant to every station
- Larger work envelope
- Quicker set-up times
- Off-line tool setting
- Rapid tool change
- Cost-effective

Various accessories are offered to increase versatility including:

- 90-degree angle adaptors
- Work steadies
- Rotating centres

## **Bespoke Solutions**

**We pride ourselves on our technical expertise, and our experienced team is available to help you find the best solution for your requirements.**

We have in-house design facilities and we commit ourselves to:

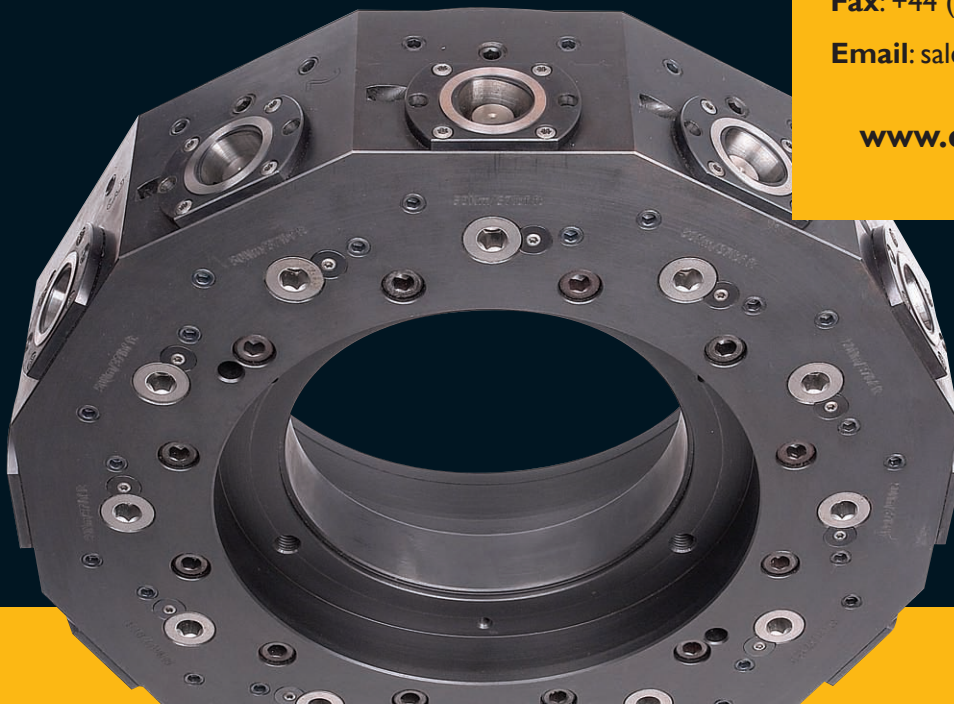
- Understand your needs.
- Offer you a suitable solution.
- Respect short lead times.

**Phone:** +44 (0)1943 466 788

**Fax:** +44 (0)1943 850 144

**Email:** [sales@craftsmantools.com](mailto:sales@craftsmantools.com)

**[www.craftsmantools.com](http://www.craftsmantools.com)**



TOOLHOLDING

WORKHOLDING

SUB-CONTRACT MACHINING



**CRAFTSMAN  
TOOLS**

Craftsman Tools Limited

Side Copse, Pool Road, Otley, West Yorkshire LS21 1JE, U.K.

T: +44 (0)1943 466 788 F: +44 (0)1943 850144

E: [sales@craftsmantools.com](mailto:sales@craftsmantools.com)

[www.craftsmantools.com](http://www.craftsmantools.com)